

CHURCH AT WORSHIP SANCTUARY

9:00 and 11:45 a.m.

Prelude	<i>Amazing Grace</i>	<i>arr. Craig Phillips</i>
Call to Worship	<i>Gloria</i> Sanctuary Choir	<i>Antonio Vivaldi</i>
Hymn of Praise	<i>Fairest Lord Jesus</i>	No. 240
Prayer		Joelle Reuer
Prayer Response	<i>Oh Lord, Hear Our Prayer</i> ***	<i>Ariel Quintana</i>
Pastoral Welcome		Jacqueline Lynch
Tithes and Offerings	Christian Record Services <i>(Loose and designated offerings go to Church Budget)</i>	
Offertory	<i>Pie Jesu</i> Alessandra Sorace, vocal	<i>Gabriel Fauré</i>
Baptism	Marilynn Smith Carpenter Gary Roy Carpenter	Randy Roberts ¹
Child Dedication	Carissa Grace Donovan ***	Randy Roberts ²
Children's Feature		Calvin Thomsen
Anthem	<i>Jesu, Joy of Man's Desiring</i> Sanctuary Choir	<i>J. S. Bach</i>
Meditation	***	
Scripture Reading	Colossians 1:15-20, TNIV <i>(Pew Bible, page 1754)</i>	Anny Ha, Kimberly Paulien
Sermon	Jesus. Period. <i>Part 1 - Jesus: First, Last and Best</i>	Randy Roberts
Hymn of Response	<i>The Church Has One Foundation</i>	No. 348
Benediction		Randy Roberts
Postlude	<i>Postlude on Old Hundredth</i> <i>Festival Toccata</i> <i>(Please maintain reverence during the Postlude)</i>	<i>Fred Bock¹</i> <i>Percy Fletcher²</i>

Ariel Quintana, conductor, Sanctuary Choir
Vaughan Grant and Gilbert Hernandez, producers
Gerald Wareham, organist
Donna Samson, first service postlude

¹First Service ***Seating Assistance ²Second Service

WORSHIP PARTICIPANTS

Alessandra Sorace is a 12-year-old homeschool student
Anny Ha and Kimberly Paulien are student dietitians, School of Allied Health Professions, Loma Linda University

Out of respect to worshippers around you, please silence all electronic devices

CALENDAR

Monday, April 4	7:00 p.m. Church Board Meeting, Room 124
Tuesday, April 5	6:30 p.m. Experiencing God Bible Study & Discussion, Fellowship Hall
Wednesday, April 6	6:00 p.m. The Open Prayer Circle, Murial McDonald, Room 103 7:00 p.m. Intercessory Prayer Group, Valerie Crosier, Room 111
Sabbath, April 9	9:00 & 11:45 a.m. Jesus. All. , Tim Gillespie, Sanctuary 10:30 a.m. Sanctuary Sabbath School: "From Exalted to Cast Down," Calvin Thomsen
	5:00 p.m. Sanctuary Vespers: LLA Symphonic Band
Sunset Today - 7:11 p.m. Sunset Next Week - 7:17 p.m.	

PASTORAL STAFF

	dial (909) 558-4570, press 1, dial ext.	
Randy Roberts	<i>Senior Pastor</i>	47091
Darold Retzer	<i>Executive Pastor</i>	47094
Donauvin Krause	<i>Business Administrator</i>	43247
Timothy Gillespie	<i>Young Adult Ministry</i>	47087
Stew Harty	<i>Media Ministries</i>	87409
Genevieve Koh Isidro	<i>Junior High Ministry</i>	46099
Jacqueline Lynch	<i>Community Services & Outreach</i>	796-8357
Rob Mohr	<i>Youth Ministry</i>	87379
Marvin Ponder	<i>Pastoral Care</i>	47081
Shirley Ponder	<i>Pastoral Care, Women's Ministries</i>	47101
Ariel Quintana	<i>Minister of Music</i>	47079
Joelle Reuer	<i>Director of Discipleship</i>	85739
Bernard Taylor	<i>Scholar in Residence</i>	47082
Calvin Thomsen	<i>Family Ministries</i>	47089
Betsy Matthews*	<i>Trust Services</i>	47091
Dan Matthews*	<i>Pastoral Care</i>	47091
Roger McQuistan*	<i>Pastoral Care</i>	47091
* Part Time	Office Fax: (909) 558-4186	
	Sabbath Morning: (909) 558-7780	

LLUC services are aired live on the church website at www.lluc.org and are also aired live and broadcast on Loma Linda Broadcasting Network (LLBN) via the Internet at www.llbn.tv, Time Warner Cable channel 17 in Loma Linda, IPTV, and Glorystar satellite (which carries LLBN, 3ABN, Hope Channel, and other Christian networks). For more information, please visit www.llbn.tv, or call (866) 552-6881.

Rebroadcast Schedule of University Church Programs on LLBN

Monday (SS)	11:30 a.m.
Tuesday	9:00 p.m.
Wednesday	7:00 p.m.
Thursday	5:00 a.m.
Friday	1:00 p.m. & 7:30 p.m.
Saturday	5:00 a.m. & 8:30 p.m.

Questions or Comments: comments@lluc.org • Online at: <http://www.lluc.org>

DVD copies of LLUC Services are available for purchase at the Loma Linda University Campus Store, (909) 558-4567.

Church Office Hours: Mon.-Thur., 8:00 a.m.-5:00 p.m.; Friday 8:00 a.m.-noon. Offices are closed for staff worship on Tuesdays from 8:30 to 9:30 a.m.

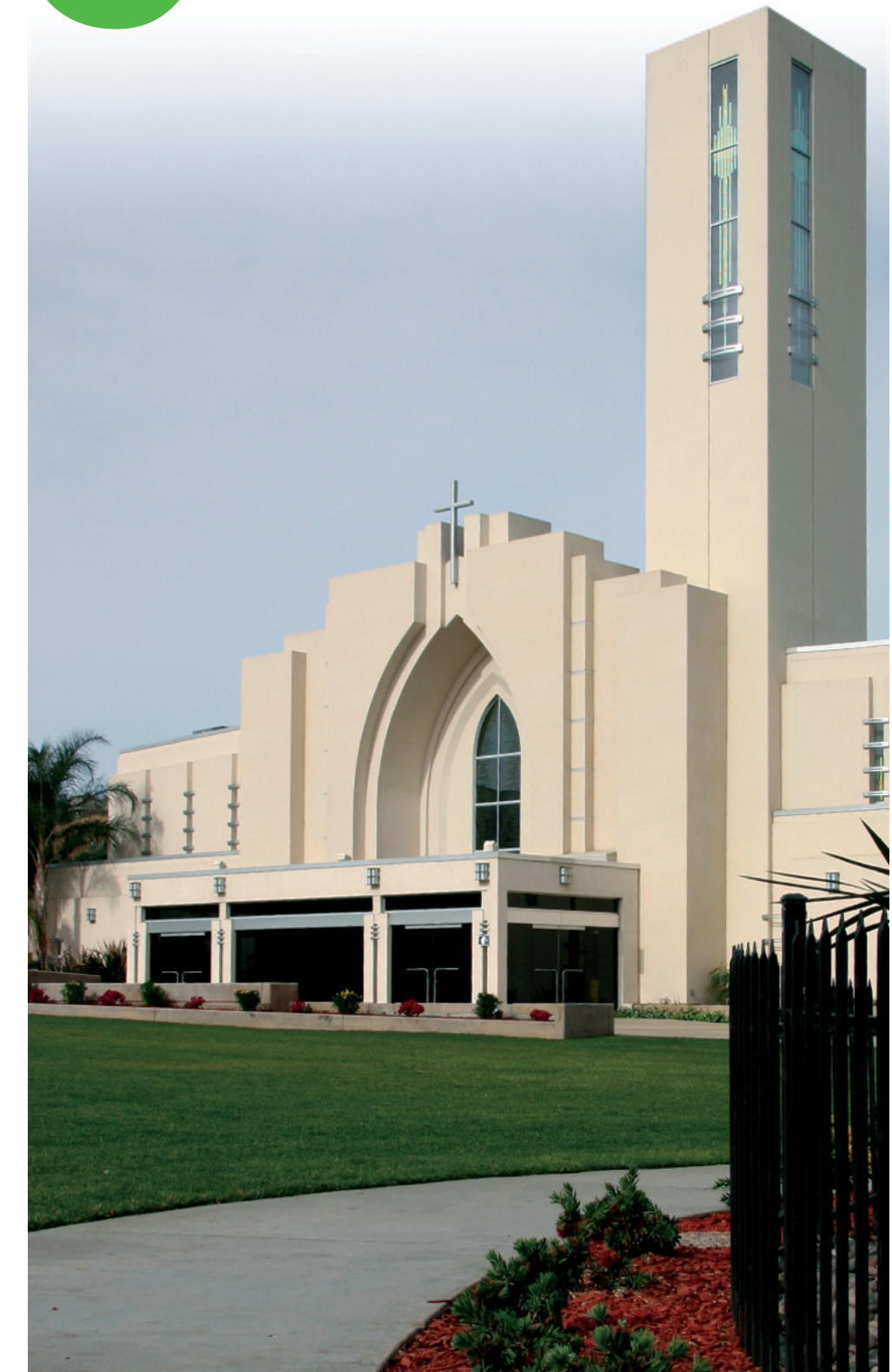
This is a weekly bulletin

Cover photo by Danelle Taylor

Loma Linda University Church

of Seventh-day Adventists

April 2, 2011



11125 Campus Street, Loma Linda, CA 92354 • (909) 558-4570

growing  disciples

CHURCH AT STUDY

SANCTUARY

10:30 a.m.

Congregational Singing	Jeremy Morada & Loma Linda Academy Students
Opening Hymn	<i>This Is My Father's World</i> No. 92
Prayer	Ryan Stitzinger
Welcome, and Introductions	Melanie Wuchenich Jobe
Musical Selection	<i>My Father's Heart</i> Rachel Lampa Danielle Santiago and Ferrenstein Hutagaol
Special Feature	Student Missions at Loma Linda Academy Robert Skoretz and Jessica Williams
Offering	Sabbath School Expense (place mission offering in envelope)
Offertory	<i>Spring from Four Seasons</i> arr. Frank J. Nalferty Alexis Elssmann, Danielle Hernandez, Hillary Juhl, and Stephanie Chang
Lesson	In the Loom of Heaven Bernard Taylor
Benediction	Bernard Taylor
Postlude	<i>Postlude on Old Hundredth</i> Fred Bock

Associate Superintendent: Melanie Jobe
Organist: Donna Samson

VESPERS

SANCTUARY

5:00 p.m.

Jeffry Kaatz & Friends

with violinist Jeff Hwang, soprano Raejin Lee,
and pianist, Karen Kaatz

Pastoral Host: Calvin Thomsen

A former student of Eleonore Schoenfield, Jeffry began his college education at Loma Linda University, graduating with honors, and was chosen the "Outstanding Senior of the Year" for the College of Arts and Sciences. From 1981-83, Dr. Kaatz completed a Master of Music degree at the University of Southern California in Los Angeles. A two-year member of the Graduate Honors String Quartet at USC, coached by Gabor Rejto, he was recognized with the "Outstanding Chamber Music Performance" award. In 1989, he earned a Doctor of Music Arts degree at the University of Southern California in cello performance, and received the award "Outstanding Doctoral Graduate of the Year" from the department of strings and has been a faculty member in the department since 1988.

Jeffry Kaatz is very active in both orchestral and chamber music. He has served as principal cellist of both the Redlands Symphony and Riverside County Philharmonic orchestras. He is a cellist in the Taylor string Quartet, a Professor of Cello, and Vice President for Advancement for La Sierra University.

RE:LIVE MINISTRY



Young Adult Ministry • Sabbath, 10:00 a.m.
Wong Kerlee Conference Center, Loma Linda University
www.reliveministry.com

Current Series: **The ONE**

Upcoming Re:Live events:
Apr. 9 • 1:30 p.m.: Re:Live Potluck, LLUC 202

ACCESS MINISTRY



High School Ministry • Sabbath, 10:00 a.m.
Room 202, LLUC
www.accesslluc.com

Current Series: "Now & Later: The Law & the Prophets"

BUILDING FUND UPDATE

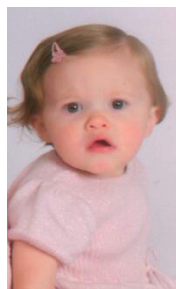
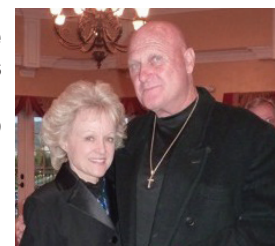
Funds Raised as of March 12, 2011
Goal: \$7,500,000

RAISED	BALANCE
3,515,339	3,984,661

We have received a variety of interesting auction items as part of the fundraising effort and you are invited to review and bid on them by either visiting <http://www.lluc.org> and click on "Bidding for Good: Internet Auction" or <http://www.biddingforgood.com/lluc>.

BAPTISMS AND CHILD DEDICATION

Gary Roy and Marilyn Smith Carpenter will be baptized at first service today. Gary is a business owner and Marilyn works with him. They have been attending LLUC since 2009. We welcome them into church membership.



Adrian and Laura Donovan bring their second child, **Carissa Grace**, for dedication today. Carissa's sister, Madelyn, joins them. Adrian is the owner of Bernardini-Donovan Insurance Services, Inc. and Laura works for California Children's Services as an occupational therapist.

CHURCH LIFE

Hospitality Dinner: We welcome out-of-town visitors to join us for lunch in Fellowship Hall following second service. Your hosts today are Lolita Davidson, Edmond and Ella Haddad, and Bruce and Suzanne Cooley. Your pastoral hosts are Calvin and Marilyn Thomsen.

Offering Today: Christian Record Services/World Budget. **Next Week:** Local Church Budget. All loose and undesignated offerings are applied to church budget. You may also give online by visiting <http://www.lluc.org>.

Center Platform Floral Arrangement is presented in loving memory of Elise Olson, our sister and aunt. From Lennart and Beverly Olson, Ellis, Mary and Elisabeth Olson, Ellen Olson-Rood, Bette Olson-DeLeon.

We regret to announce the death of Dalton Baldwin on March 21. He is survived by his wife, Barbara; daughters Cheryl Goynes and Yvonne Foster; son, Duane Baldwin; and eight grandchildren. A memorial service is April 9 at 7:30 p.m. in the Sanctuary.

Bulletin Recycling: If you are not taking your bulletin with you, please place it in the receptacle on top of the trash cans at each exit door of the sanctuary.

Skip Lunch and Pray: You are invited to join us immediately in the South transept after second service today, April 2, for a special time of prayer. In doing so you will be joining with others in praying for one another, our local church and for the world church. If you have any questions, please call Anita at (909) 792-9150.

Donations in Tithe and Offering Envelopes: Thank you for helping us process your donations more efficiently by not sealing, taping, or folding the tithe and offering envelopes.

COMMUNITY LIFE

The Loma Linda Lyric Symphony Orchestra will present a concert of classical music today, April 2, at 8:00 p.m. in the Sanctuary. Admission is free.

The LLU School of Nursing invites all alumni to attend the Annual Homecoming Weekend events April 8-10. For more information, please call (909) 558-1000, ext. 45437.

Loma Linda Academy Alumni Homecoming, is April 9, 10:30 a.m., in Chan Auditorium. An Alumni/Faculty potluck will immediately follow the worship service in the high school gymnasium. For more information call (909) 796-0161, ext. 3313.

The LLUC Children's Ministries Department has a new website that you are invited to check out. Go to www.lluc.org and choose Ministries. Click on Children's Ministries and get updated announcements, helpful resources and SS information. You can also access the website at <http://www.ukidsministry.com>.

LLUC Campers will be at Catalina Spa in Desert Hot Springs April 8-10. All are welcome. For information and reservations call Roger and Jeanne Heinrich at (909) 824-6357.

Literature project: Help provide literature for visitors to Loma Linda's medical and church facilities by your prayers and financial support. This project provides literature to hospitals, doctors' offices, clinics, labs, and the church lobby. Mark your donation "People's Part Literature" on the envelope.

The LLUC Pre-marriage Seminar will begin April 8 at 7:00 p.m. Led by Calvin Thomsen, this five-week series will provide couples the tools needed for a strong, successful marriage. To sign up, please call (909) 558-4570, ext. 47095.

Spiders & Snakes and Other Amazing Ambassadors of God, is a spectacular program presented by the Dept. of Earth and Biological Sciences that will feature live creatures including a Harris' Hawk, a bobcat, spiders and multiple deadly snakes. It promises to be an hour packed with heart pounding wonder for kids of all ages who love God's most unique creatures. All children in attendance 10 years and younger will receive a "real baby snake" replica made of genuine plastic. Join us for this special Vespers program April 16, 5:00 p.m. in the Sanctuary.

The LLU School of Allied Health Professions invites alumni and friends to the 15th-annual Alumni Homecoming and Continuing-education Convention, April 15-16. For information and to register, visit www.llu.edu/allied-health/homecoming.

SECC is holding a mid-term constituency meeting for San Bernardino County Tuesday, April 19, 7:00 p.m. at the Redlands Church, 520 Brookside Ave., Redlands. All members are encouraged to attend.